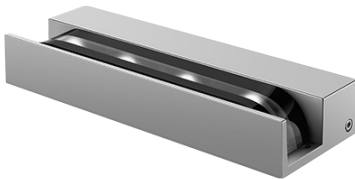




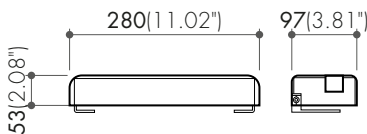
LED3*WINDOW POWER L

Projecteur LED à faisceau serré, architectural pour applications extérieures
Architectural LED floodlight with narrow beam angle, for outdoor applications.



CARACTÉRISTIQUES TECHNIQUES TECHNICAL FEATURES

Puissance Power	36 W
Source Source	16 LED CREE/OSRAM
Flux sortant Delivered flux	1100 ~ 1800 lm
IRC CRI	85+ (90+ en option) 85+ (90+ in option)
Ellipses de MacAdam MacAdam step	3
Durée de vie Lifetime	50 000h - L80B10 - Ta 25°C



CONSTRUCTION CONSTRUCTION

Corps en aluminium moulé sous pression peint au fluorocarbure, couvercle en verre trempé, optiques en polycarbonate.

Fluorocarbon painted die-cast aluminum body, tempered glass cover, polycarbonate optical lenses.

LIMITES DE TEMPÉRATURE TEMPERATURE LIMITS







Température ambiante de fonctionnement	de -20°C à +50°C
Ambient operating temperature	from -4°F to +122°F

FINITIONS FINISH COLORS

RAL9023 comme couleur standard, autres couleurs RAL sur demande.
RAL9023 as standard colour, other RAL colours on request.

LED3*WINDOW POWER L

CARACTÉRISTIQUES FEATURES

Références References	Flux sortant Delivered flux	Puissance Power	Alimentation Power supply	Gestion externe en option Optional remote piloting
LWPL.D1	1800 lm	36 W	  	DALI, 0-10V
LWPL.D4	1100 lm	36 W	  	RDM

INFORMATION DE COMMANDE ORDERING INFORMATION

LWPL.D1 - **30K**

Code produit
Product code

Couleur de lumière
Light color

LWPL.D1

827 2700K
830 3000K
840 4000K

Code produit
Product code

Couleur de lumière
Light color

LWPL.D4

RGB30K RGB+3000K
RGB40K RGB+4000K